

# P6

TIG - With or without Filler Wire, AVC, OSC

**Mobile Power Source** for orbital tube welding



**POLYSOUDE**  
THE ART OF WELDING





## Technical Specification

Welding method	TIG - DC with or without Filler Wire
Input power	Three phase 400 V / 415 V $\pm$ 10 % - 50 / 60 Hz incl. multi voltage kit option from 200 V to 480 V
Open circuit voltage	98 V
Insulation class	F
Protection class	IP 23S (touch screen closed)
Welding current	5 to 300 A - constant or pulsed
Welding current precision	$\pm$ 1A when $I \leq 100$ A and $\pm$ 1% when $I > 100$ A
Duty cycle	300 A / 35 % - 265 A / 60% - 240 A / 100 %
Motion controls	Torch rotation: constant or pulsed Wire feeder: constant or pulsed / automatic wire retract AVC - Arc Voltage Control OSC - Torch Oscillation Control
Shielding gas control	Welding gas, backing gas with flow safety valve
Power source cooling	Forced ventilation
Welding torch cooling	Built-in closed loop water cooling system with flow safety valve
Display / recording (non-volatile) of real values during welding	Arc Voltage, welding current, electrode position in angular degrees, welding speed and wire speed
Real time data acquisition	Hard disc / USB memory stick
Dimensions L x W x H	630 x 470 x 795 mm 630 x 470 x 970 mm (incl. multi voltage option) 950 x 560 x 1130 mm (incl. multi voltage + trolley option)
Weight	75 kg (115 kg incl. multi voltage option)
Standards	EN 60974-1 / EN 50199



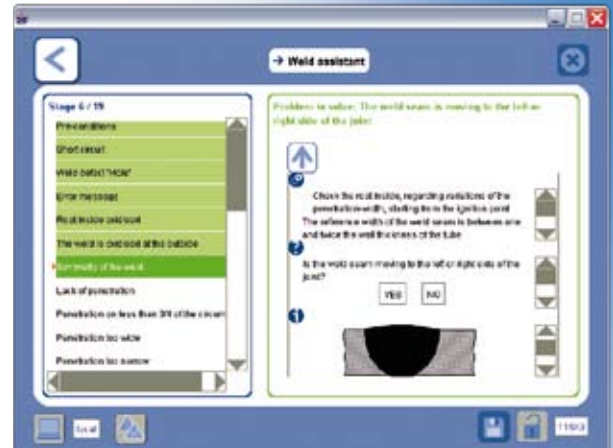
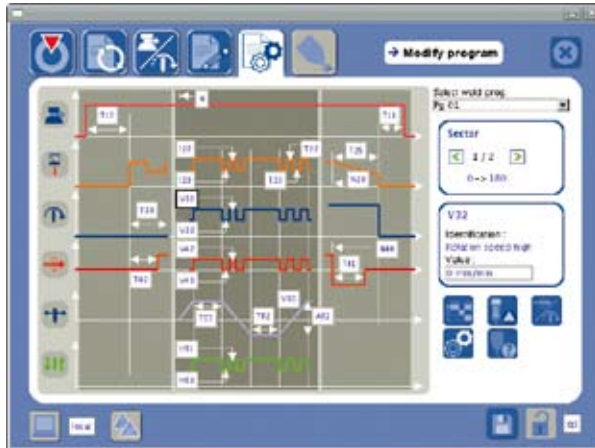
## Options and Accessories

- Large 10,4" colour touch screen with multilingual, graphically assisted welding software
- Laptop
- Full function remote control 4- axes or 6- axes
- Wire feeder
- AVC - Arc Voltage Control
- OSC - Torch Oscillation Control
- Interface for welding manipulators for mechanised welding (positioner, column and boom, seam welder..)
- Mini-printer
- Multi voltage kit 200 V to 480 V
- Control kit for other than POLYSOUDE™ welding heads
- Manual tack welding kit including water-cooled TIG torch
- Extension cable (15 m) for welding heads
- Kit for backing gas
- Dual welding head switch box
- Trolley

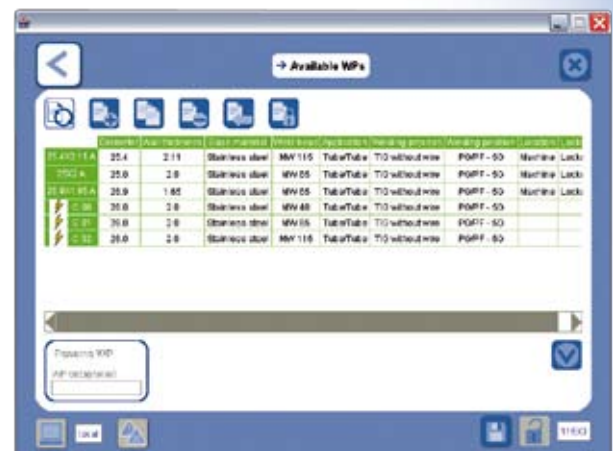
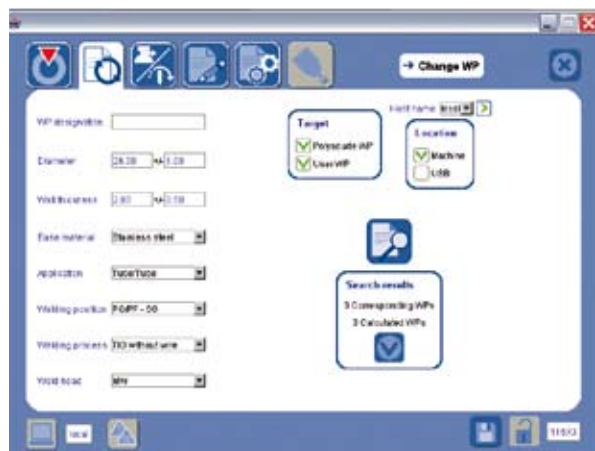
# Graphical User Interface (HMI): Just follow the instructions!

## ► Intuitive graphical interface

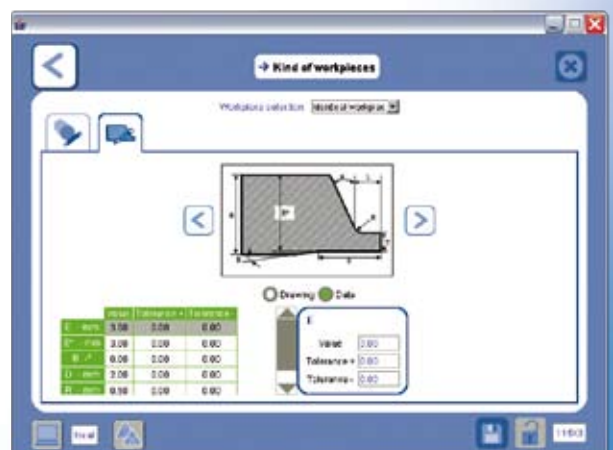
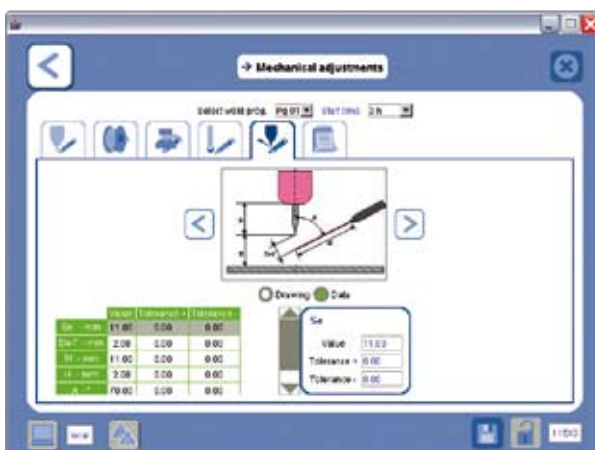
With multilingual "Help" menu for optimised welding programs



## ► Synergic mode auto-programming



## ► Traceability and complete documentation of mechanical and electrical parameters



# POLYSOUDE: Related Services

## ► Guidance and technical support

A welding application specialist in your area will advise you on the welding process and appropriate equipment for your application.

## ► Commissioning / Training

A complete training program will enable you to start using the equipment immediately and in the best way possible.

## ► Maintenance / Repair

Maintenance and repair operations can be carried out at the Polysoude plant as well as on site by our service network.

## ► Rental service

Increase the flexibility of your production! A large range of equipment is available for rental and from our hire fleet.

## Your partners worldwide

### AUSTRALIA

POLYSOUDE S.A.S.  
☎ +33 (0) 2 40 68 1100  
info@polysoude.com

### AUSTRIA

POLYSOUDE AUSTRIA GmbH  
☎ +43 (0) 3613 2 00 36  
austria@polysoude.at

### BELGIUM

POLYSOUDE BENELUX  
☎ +31 (0) 653 84 23 36  
k.meurs@polysoude.com

POLYSOUDE BENELUX  
(SERVICE)  
☎ +31 (0) 653 38 85 58  
h.milder@polysoude.com

### BRAZIL

AJADE COMÉRCIO INSTALAÇÕES  
E SERVIÇOS Ltda.  
☎ +55 (0) 11 4524 3898  
fernando@ajade.com.br

### BULGARIA

KARWELD EOOD  
☎ +359 (0) 2973 32 15  
Karweld@bg400.bg

### CANADA

MAG TOOL Inc.  
EDMONTON - ALBERTA  
☎ +1 (0) 780 4 47 19 04  
ray@magtool.net

MAG TOOL Inc.  
CAMBRIDGE - ONTARIO  
☎ +1 (0) 519 651 10 50  
magtool@magtool.net

### CHINA

POLYSOUDE SHANGHAI CO. Ltd  
☎ +86 (0) 2164 09 78 26  
j.zhang@polysoude.cn

### CROATIA

EUROARC D.O.O.  
☎ +385 (0) 1240 60 77  
euroarc@euroarc.hr

### CZECH REPUBLIC

POLYSOUDE AUSTRIA GmbH  
☎ +420 602 602855  
m.maousek@polysoude.cz

### DENMARK

POLYSOUDE DENMARK  
☎ +45 (0) 32 94 85 10  
orbital@polysoude.dk

### EGYPT

POLYSOUDE UK  
☎ +44 (0) 1942 820 935  
info@polysoude.com

### FINLAND

SUOMEN TEKNOHAUS OY  
☎ +358 (0) 927 47 2 10  
info@teknohaus.f

### FRANCE

POLYSOUDE S.A.S.  
☎ +33 (0) 2 40 68 1100  
info@polysoude.com

### GERMANY

POLYSOUDE DEUTSCHLAND  
KORNWESTHEIM  
☎ +49 (0) 7154 1796 90  
info@polysoude.com

POLYSOUDE DEUTSCHLAND  
LEVERKUSEN / OPLADEN  
☎ +49 (0) 2171 58 1336  
info@polysoude.com

### ITALY

POLYSOUDE ITALIA SRL  
☎ +39 (0) 2 93 79 90 94  
b.baccegga@polysoude.it

### JAPAN

GMT CO Ltd - KAWASAKI  
☎ +81 (0) 44 222 67 51  
gmt@e-gmt.co.jp

GMT CO Ltd - OSAKA  
☎ +81 (0) 66 472 67 55  
gmt.kansai@e-gmt.co.jp

### JORDAN

POLYSOUDE UK  
☎ +44 (0) 1942 820 935  
info@polysoude.com

### NEW ZEALAND

POLYSOUDE S.A.S.  
☎ +33 (0) 2 40 68 1100  
info@polysoude.com

### NORWAY

POLYSOUDE BENELUX  
☎ +31 (0) 653 84 23 36  
k.meurs@polysoude.com

### PAKISTAN

POLYSOUDE S.A.S.  
☎ +33 (0) 2 40 68 1100  
info@polysoude.com

### PHILIPPINES

POLYSOUDE ASIA  
☎ +86 (0) 65 862 60 08  
Jmpan@singnet.com.sg

### SINGAPORE

POLYSOUDE ASIA  
☎ +86 (0) 65 68 62 60 08  
Jmpan@singnet.com.sg

### SIN SOON HUAT WELDING

PRODUCTS PTE. Ltd  
☎ +65 (0) 62 65 60 88  
vchng@sshcorp.com

### SLOVAKIA

POLYSOUDE AUSTRIA GmbH  
☎ +43 (0) 3613 2 00 36  
austria@polysoude.at

### SOUTH AFRICA

POLYSOUDE S.A.S.  
☎ +33 (0) 2 40 68 1100  
info@polysoude.com

### SPAIN

PRAXAIR SOLDADURA S.L.  
☎ +34 (0) 91 78 55 77 09  
Luis\_Alfredo\_de\_Andres@praxair.com

### SWEDEN

POLYSOUDE BENELUX  
☎ +31 (0) 653 84 23 36  
k.meurs@polysoude.com

### SWITZERLAND

POLYSOUDE (SWITZERLAND) Inc.  
☎ +41 (0) 43 243 50 80  
contact@polysoude.ch

### TAIWAN R.O.C.

FIRST ELITE ENT. CO. Ltd  
☎ +886 (0) 287 97 88 99  
auto.pipe@msa.hinet.net

### THAILAND

POLYSOUDE ASIA  
☎ +86 (0) 65 6862 60 08  
Jmpan@singnet.com.sg

### TURKEY

TIMKAYNAK VE ELEKTRONIK  
SISTEMLER SAN VE TIC Ltd  
☎ +90 (0) 212 2 30 87 77  
timint@superonline.com

### UNITED ARAB EMIRATES

GERIVAN GULF ENTERPRISES Ltd  
☎ +971 (0) 65 31 61 71  
info@polysoude.com

### UKRAINE

POLYSOUDE RUSSIA  
☎ +7 (0) 495 564 86 81  
polysoude@co.ru

### UNITED STATES

ASTRO ARC POLYSOUDE Inc.  
☎ +1 (0) 661 702 0141  
sales@astroarc.com

### VENEZUELA

ENRIVA C.A.  
☎ +58 (0) 243 242 4541  
enriva@cantv.net  
cantv.net



### SOUTH KOREA

CHEMKO CO Ltd  
☎ +82 (0) 2 567 5336  
chemiko@chol.com

### MALAYSIA

POLYSOUDE ASIA  
☎ +86 (0) 65 862 60 08  
Jmpan@singnet.com.sg

### MEXICO

ASTRO ARC POLYSOUDE Inc.  
☎ +1 (0) 661 702 0141  
sales@astroarc.com

### NETHERLANDS

POLYSOUDE BENELUX  
☎ +31 (0) 653 84 23 36  
k.meurs@polysoude.com

POLYSOUDE BENELUX  
(SERVICE)  
☎ +31 (0) 653 38 85 58  
h.milder@polysoude.com

### POLAND

ZALCO Sp. z o.o. - WARSZAWA  
☎ +48 (0) 22 894 55 00  
zalco@zalco.lan.pl

### UNIDAWELD - BEDZIN

☎ +48 (0) 32 225 50 60  
dszota@poczta.onet.pl

### PORTUGAL

PRAXAIR SOLDADURA S.L.  
☎ +34 (0) 91 453 30 00  
Luis\_Alfredo\_de\_Andres@praxair.com

### ROMANIA

DEBISUD S.R.L.  
☎ +40 (0) 255 2157 85  
debisud@rdslink.ro

### RUSSIA + C.I.S.

POLYSOUDE RUSSIA  
☎ +7 (0) 495 564 86 81  
polysoude@co.ru

### SAUDI ARABIA

ALRUQUEE MACHINE TOOLS  
☎ +966 (0) 385 7 63 87  
2HCoordinator1.Peiris@alrugee.com